

BIOARCTIC AB (PUBL)  
NASDAQ STOCKHOLM: BIOA B

# BioArctic Company Presentation

Redeye Neurology Seminar  
October 3, 2019

---

*Gunilla Osswald, PhD, CEO*



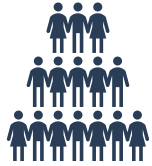
# Disclaimer

---

- This presentation has been prepared and produced by BioArctic AB (publ) (“BioArctic”) solely for the benefit of investment analysis of BioArctic and may not be used for any other purpose. Unless otherwise stated, BioArctic is the source for all data contained in this presentation. Such data is provided as at the date of this presentation and is subject to change without notice.
- This presentation includes forward-looking statements. These forward-looking statements involve known and unknown risks, uncertainties and other factors, which may cause BioArctic’s actual results, performance, achievements or industry results to be materially different from those expressed or implied by these forward-looking statements. Forward-looking statements speak only as of the date of this presentation and BioArctic expressly disclaims any obligation or undertaking to release any update of, or revisions to, any forward-looking statement in this presentation, as a result of any change in BioArctic’s expectations or any change in events, conditions or circumstances on which these forward-looking statements are based.
- This presentation does not constitute or form part of, and should not be construed as, an offer or invitation for the sale of or the subscription of, or a solicitation of any offer to buy or subscribe for, any securities, nor shall it or any part of it or the fact of its distribution form, or be relied on in connection with, any offer, contract, commitment or investment decision relating thereto, nor does it constitute a recommendation regarding the securities of BioArctic.
- The information in this presentation has not been independently verified.
- No regulatory body in Sweden or elsewhere has examined, approved or registered this presentation.

# BioArctic – a unique Swedish biopharma company

---



**High unmet need** for disease-modifying treatments for Alzheimer's and Parkinson's diseases creates **large commercial opportunity**



**World-class research and development driven organization** with basis in founder's breakthrough discoveries and fruitful collaborations with **leading academic researchers** generating **innovative projects**



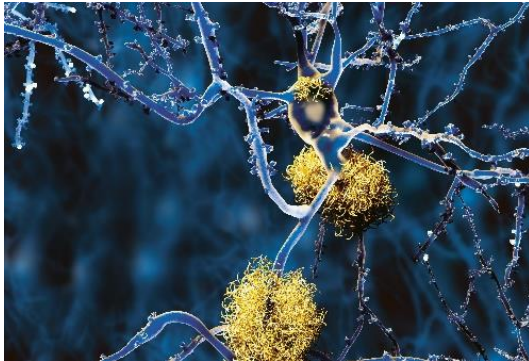
**Attractive and well-balanced project portfolio** with projects from discovery through Phase 3 and combination of both proprietary projects with substantial marketing and out-licensing potential and partnered projects generating income



**Well-financed** with BSEK >1 (MUSD >100) in cash, **positive financial results** during the last six years and **valuable collaboration agreements** totaling BSEK 9.3 (BUSD ~1) plus royalties

# BioArctic R&D focuses on improving life for patients with Central Nervous System disorders

## Alzheimer's Disease



### BAN2401

- Strong clinical Phase 2b results in early Alzheimer's
- Phase 3 confirmatory study started by partner



### Discovery stage programs

- 3 additional preclinical stage disease modifying antibody programs with different mechanisms

## Parkinson's Disease



### ABBV-0805

- Phase 1 study ongoing by partner



### Discovery stage projects

- Preclinical stage projects in research collaboration partnered with



## Complete Spinal Cord Injury



### SC0806

- Phase 1 safety evaluated, and Phase 2 started

## Diagnostics and Technology



### Imaging and biochemical biomarkers

- For Alzheimer's and Parkinson's diseases

### Blood-Brain Barrier Technology

- Developing new technology platform to facilitate the passage of biologics over the blood-brain barrier

# Experienced management, innovative scientists and collaborations with universities to bring forward the next groundbreaking therapy

## Experienced Management

**GUNILLA OSSWALD, PhD**  
**CEO**

Former VP AstraZeneca (portfolio, projects, clinical, marketing)

*30 years relevant experience*



**HANS BASUN, Professor, MD**  
**VP CMO**

Geriatrician at Memory Clin, Uppsala former AstraZeneca (clinical development)

*35 years relevant experience*



**CHRISTER MÖLLER, PhD**  
**VP CSO**

Extensive experience from small biotech (research & development)

*20 years relevant experience*



**JOHANNA FÄLTING, PhD**  
**VP Translational Science & Pharmacology**

Former AstraZeneca R&D (discovery & drug projects)

*15 years relevant experience*



**MIKAEL MOGE, PhD**  
**VP CMC and Protein Chemistry**

Former AstraZeneca (Pharmaceutical Development) and Syntagon (Head Development & Pilot Plant)

*20 years relevant experience*



**NORA SJÖDIN**  
**VP Regulatory Affairs**

Former Pharmalink, NDA Regulatory Service, AstraZeneca

*20 years relevant experience*



**LARS LANNFELT, Professor, MD**  
**Co-founder, Senior VP University Collaborations**

Senior Professor, Uppsala University  
Discovered the Swedish and Arctic mutations in Alzheimer's Disease

*35 years relevant experience*





## Innovative Scientists



## Collaboration with Universities



# Attractive and well-balanced project portfolio combines fully-financed partner projects and cutting-edge proprietary projects

	Product candidate	Indication	Partner	Discovery	Preclinical	Phase 1	Phase 2	Phase 3	
Neurodegenerative Diseases	<b>BAN2401:</b> anti-A $\beta$ antibody	Alzheimer's Disease		→					
	<b>BAN2401:</b> anti-A $\beta$ antibody	Down's Syndrome <sup>2</sup> Traumatic Brain Injury <sup>2</sup>	—	→					
	<b>BAN2401 BACK-UP:</b> anti-A $\beta$ antibody	Alzheimer's Disease		→					
	<b>AD1801:</b> Undisclosed information	Alzheimer's Disease	—	→					
	<b>AD1502:</b> Undisclosed information	Alzheimer's Disease	—	→					
	<b>AD1503:</b> Undisclosed information	Alzheimer's Disease	—	→					
	<b>ABBV-0805<sup>3</sup>:</b> anti- $\alpha$ -synuclein antibody	Parkinson's Disease	abbvie	→					
	<b>PD1601:</b> anti- $\alpha$ -synuclein antibody	Parkinson's Disease	abbvie	→					
	<b>PD1602:</b> anti- $\alpha$ -synuclein antibody	Parkinson's Disease	abbvie	→					
Diagnostics & Technology	<b>IMAGING AND BIOCHEMICAL BIOMARKERS: A<math>\beta</math></b>	Alzheimer's Disease	—	→					
	<b>IMAGING AND BIOCHEMICAL BIOMARKERS: <math>\alpha</math>-synuclein</b>	Parkinson's Disease	abbvie	→					
	<b>BBB-TECHNOLOGY:</b> blood-brain barrier	Multiple application areas	—	→					
Spine	<b>SC0806:</b> FGF1/medical device	Complete Spinal Cord Injury	—	→					

as of June 30, 2019

- 1) Partner with Eisai on BAN2401 for treatment of Alzheimer's disease. Eisai partnered with Biogen on BAN2401 in 2014
- 2) Dementia and cognitive impairment associated with Down's syndrome and Traumatic Brain Injury
- 3) AbbVie in-licensed BAN0805 in late 2018 and will continue to develop BAN0805, now with the designation ABBV-0805

# Long-standing and extensive partnerships

## Alzheimer's disease

### Partner Track Record



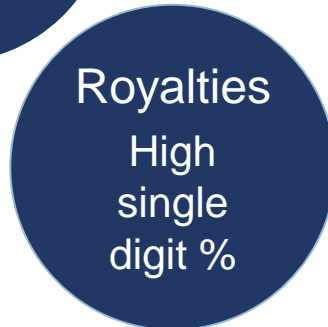
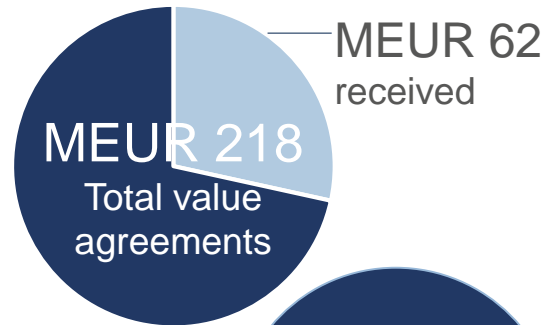
Discovered and developed world's best-selling medicine for symptoms in Alzheimer's



**10+ projects in dementia**

Currently in development

### Collaboration and License



- BioArctic retains rights to BAN2401 in other indications and option to market in the Nordics

## Parkinson's disease

### Partner Track Record



World's all-time best-selling medicine (BUSD 20)

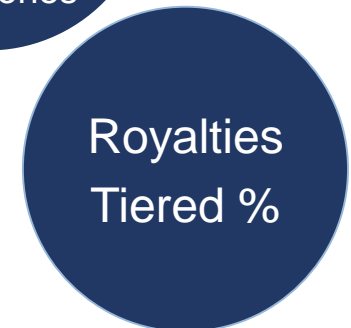
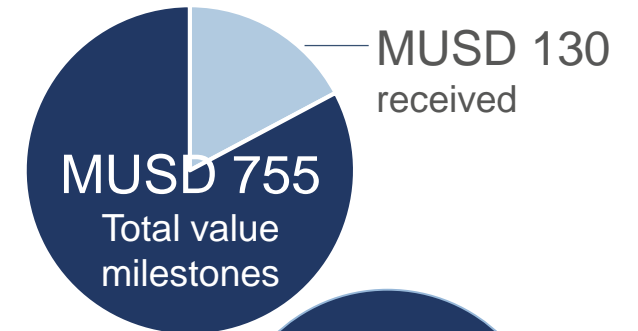


10 different indications in immunology

Approved product for symptoms associated with Parkinson's disease



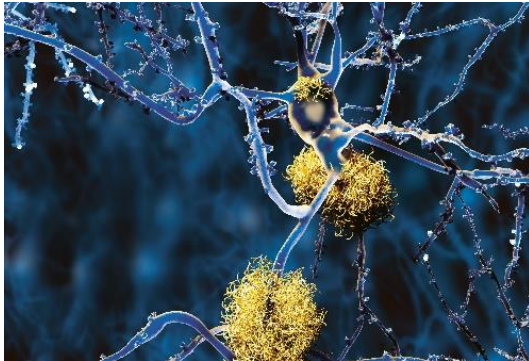
### Collaboration and License



- AbbVie global rights to alpha-synuclein portfolio for all indications

# Upcoming news flow

## Alzheimer's Disease



### BAN2401 (Eisai)

- To present data at international congresses incl. CTAD December 2019
- Phase 3 confirmatory study results 2022
- Phase 2b open label extension study results
- Secondary prevention study start 2020

### Discovery stage programs

- Advance into preclinical development

## Parkinson's Disease



### ABBV-0805 (AbbVie)

- Complete Phase 1 study

### Discovery stage projects

- Continue development in AbbVie collaboration

## Complete Spinal Cord Injury



### SC0806

- Phase 1/2 study interim analyses of safety and efficacy (4Q 2019/1Q 2020)

## Diagnostics and Technology



### Blood-Brain Barrier Technology Platform

- Expansion and continued development