

**BIOARCTIC AB (PUBL)
NASDAQ STOCKHOLM: BIOA B**

Nordea Small and Mid Cap Days

Stockholm, August 26, 2021

Gunilla Osswald, PhD, CEO



Disclaimer

- This presentation has been prepared and produced by BioArctic AB (publ) (“BioArctic”) solely for the benefit of investment analysis of BioArctic and may not be used for any other purpose. Unless otherwise stated, BioArctic is the source for all data contained in this presentation. Such data is provided as at the date of this presentation and is subject to change without notice.
- This presentation includes forward-looking statements. These forward-looking statements involve known and unknown risks, uncertainties and other factors, which may cause BioArctic’s actual results, performance, achievements or industry results to be materially different from those expressed or implied by these forward-looking statements. Forward-looking statements speak only as of the date of this presentation and BioArctic expressly disclaims any obligation or undertaking to release any update of, or revisions to, any forward-looking statement in this presentation, as a result of any change in BioArctic’s expectations or any change in events, conditions or circumstances on which these forward-looking statements are based.
- This presentation does not constitute or form part of, and should not be construed as, an offer or invitation for the sale of or the subscription of, or a solicitation of any offer to buy or subscribe for, any securities, nor shall it or any part of it or the fact of its distribution form, or be relied on in connection with, any offer, contract, commitment or investment decision relating thereto, nor does it constitute a recommendation regarding the securities of BioArctic.
- The information in this presentation has not been independently verified.
- No regulatory body in Sweden or elsewhere has examined, approved or registered this presentation.

BioArctic – a unique Swedish biopharma company

Improving life for patients with central nervous system disorders



High unmet need for disease-modifying treatments for Alzheimer's and Parkinson's diseases creates **large commercial opportunity**



World-class research and development driven organization with basis in founder's breakthrough discoveries and fruitful collaborations with leading **academic researchers** and **pharma companies** generating and developing **innovative projects**



Attractive and well-balanced project portfolio with projects from discovery through Phase 3 and combination of both proprietary projects with substantial marketing and out-licensing potential and partnered projects generating income



Well-financed with close to BSEK 1 (MUSD $\approx 110^1$) in cash, **net profitable** during seven of the last eight years and **valuable collaboration agreements** totaling BSEK 8.9² (BUSD ~ 1) plus royalties

Attractive and well-balanced project portfolio combines fully-financed partner projects and cutting-edge proprietary projects

	Project	Partner	Discovery	Preclinical	Phase 1	Phase 2	Phase 3
ALZHEIMER'S DISEASE	Lecanemab (BAN2401) (<i>Clarity AD</i>)	Eisai ¹	Early Alzheimer's disease ³				
	Lecanemab (BAN2401) (<i>AHEAD 3-45</i>)	Eisai ¹	Preclinical (asymptomatic) Alzheimer's disease ⁴				
	BAN2401 back-up	Eisai					
	AD1801						
	AD1502						
	AD1503						
	AD-BT2802						
	AD-BT2803						
	AD2603						
PARKINSON'S DISEASE	ABBV-0805 ²	AbbVie					
	PD1601	AbbVie					
	PD1602	AbbVie					
OTHER CNS DISORDERS	Lecanemab (BAN2401)		Down's syndrome ⁵ Traumatic brain injury ⁵				
	ND3014						
BLOOD BRAIN BARRIER	Brain Transporter (BT) technology platform						
DIAGNOSTICS	Imaging and biochemical biomarkers – Alzheimer's disease						
	Imaging and biochemical biomarkers – Parkinson's disease	AbbVie					

as of June 30, 2021

- 1) Partnered with Eisai for lecanemab (BAN2401) for treatment of Alzheimer's disease. Eisai entered partnership with Biogen regarding lecanemab (BAN2401) in 2014
- 2) AbbVie in-licensed BAN0805 in late 2018 and develops the antibody with the designation ABBV-0805
- 3) Mild cognitive impairment due to Alzheimer's disease and mild Alzheimer's disease
- 4) Normal cognitive function with intermediate or elevated levels of amyloid in the brain
- 5) Dementia and cognitive impairment associated with Down's syndrome and with traumatic brain injury

Long-standing and extensive partnerships

Alzheimer's disease

Partner track record

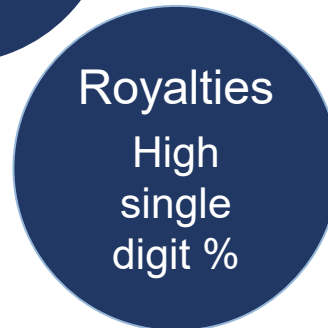
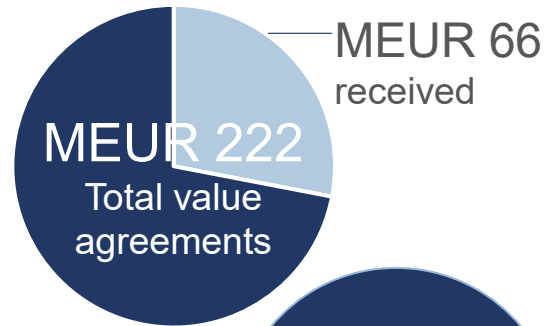


Discovered and developed world's best-selling medicine for symptoms in Alzheimer's



Industry-leading pipeline in dementia area

Collaboration and license



- BioArctic retains rights to lecanemab in other indications and option to market in the Nordics

Parkinson's disease

Partner track record



World's all-time best-selling medicine (BUSD 20)

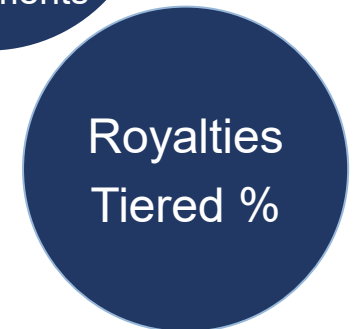
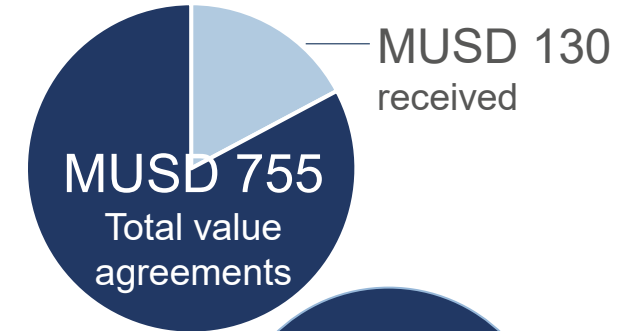


10 different indications in immunology

Approved product for symptoms associated with Parkinson's disease



Collaboration and license



- AbbVie global rights to alpha-synuclein portfolio for all indications

Sources: Eisai, AbbVie and BioArctic corporate information

Alzheimer's disease – a global pandemic with a high unmet medical need and high costs to society

High unmet medical need

No existing disease-modifying treatment

TRIPLING
in the next 30 years

Today
> 30 MILLION
people have Alzheimer's disease

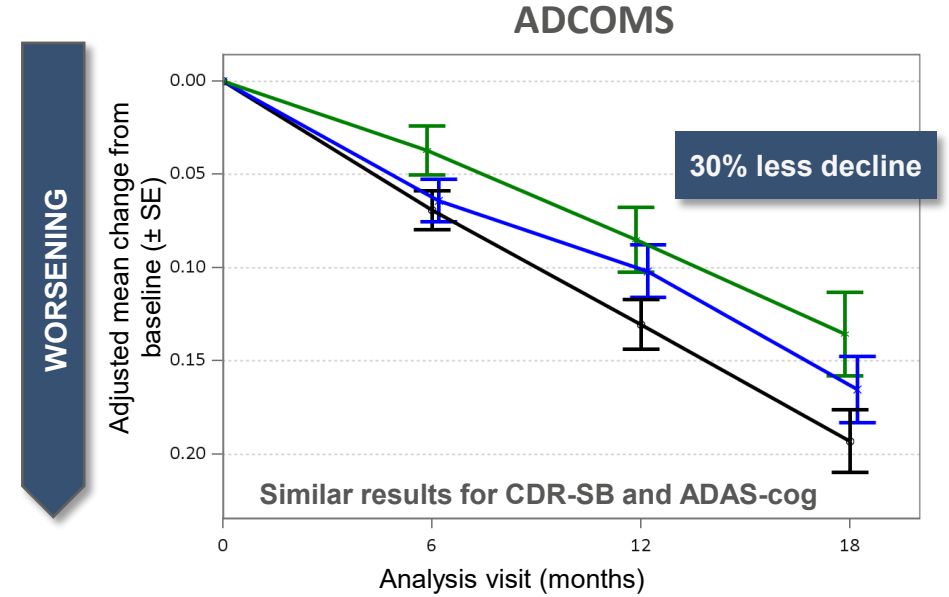
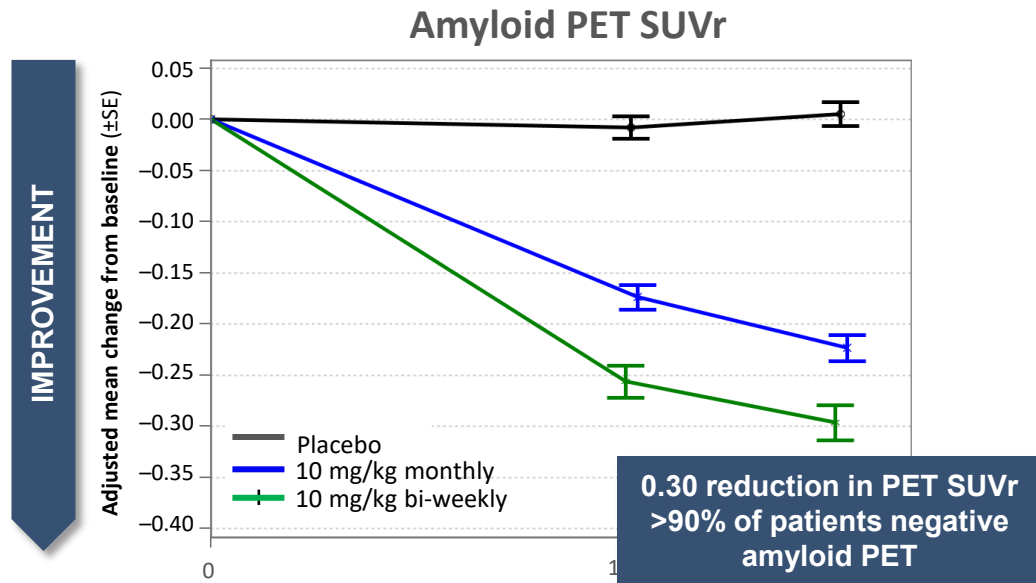
Sources: WHO, <https://www.who.int/news-room/fact-sheets/detail/dementia>

High cost to society

In 10 years
\$2 TRILLION
annually

Today
\$1 TRILLION
annually

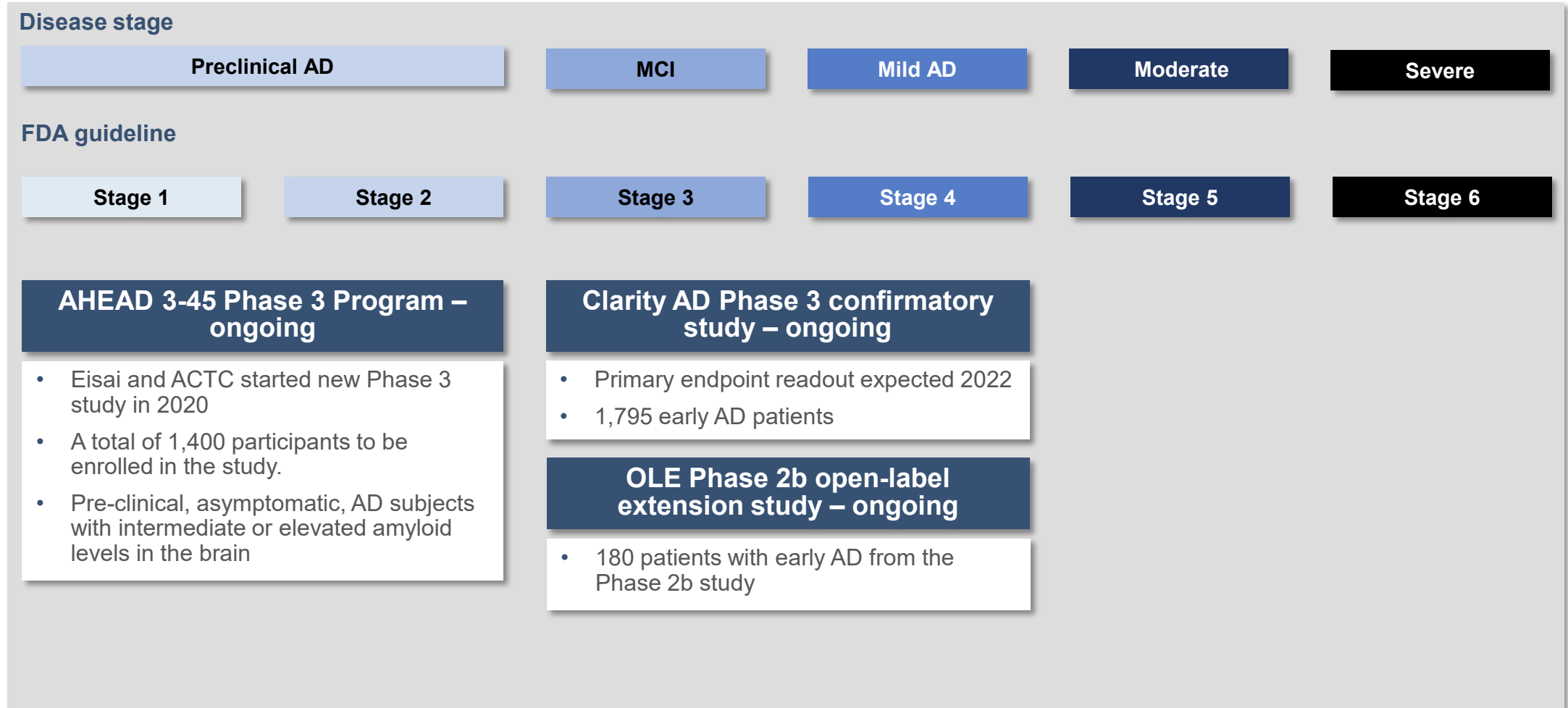
Lecanemab: potential disease modifying antibody for Alzheimer's disease with positive Phase 2b results



Lecanemab has positive Phase 2b results

- **Large trial:** 856 early Alzheimer's patients
- **Consistent effects** on clinical outcomes, imaging and neurodegenerative biomarkers
- **Rapid onset** of clinical effect
- **Effect increases over time**
- **Good safety profile** – no titration required due to low frequency of ARIA-E (<10%)

Broad lecanemab clinical program – driven by BioArctic’s partner Eisai



Our view on current developments in the Alzheimer's disease field



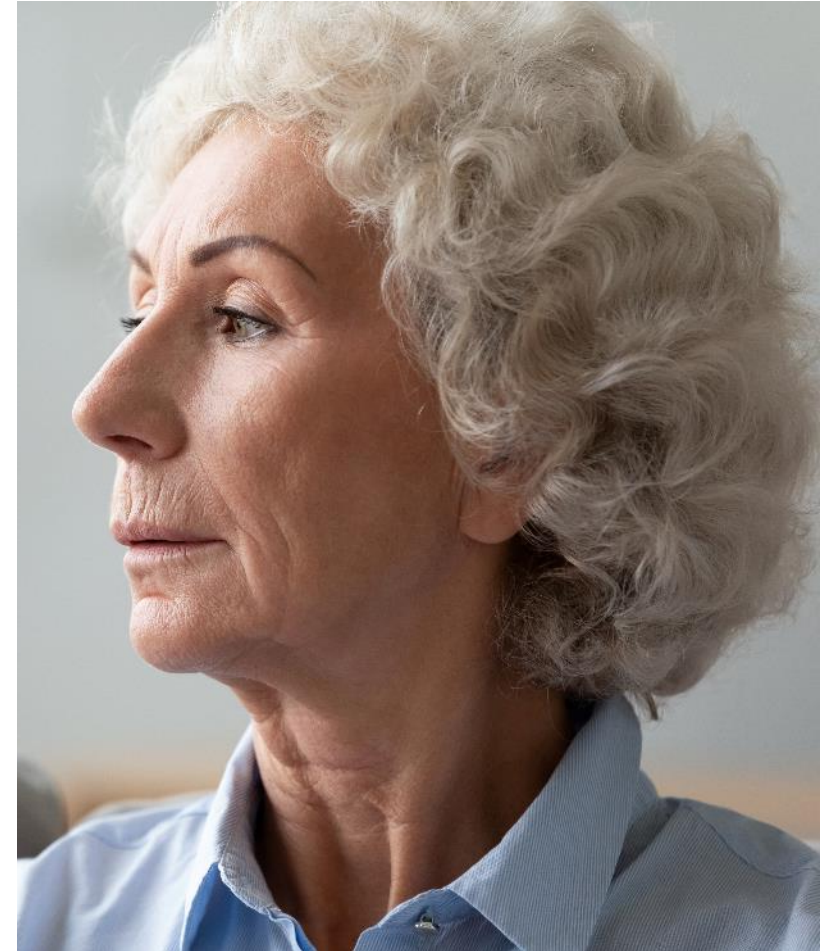
Recent highlights

Lecanemab

- The FDA granted Breakthrough Therapy designation for lecanemab in Alzheimer's disease, which is a program intended to facilitate and accelerate the development and review of drugs for serious or life-threatening conditions
- Our partner Eisai has initiated communication with the FDA to seek the most optimal regulatory pathway

Other

- BioArctic's manuscript "Elevated soluble amyloid beta protofibrils in Down syndrome and Alzheimer's disease" published in *Molecular and Cellular Neuroscience*
- Patent granted in Japan for new antibodies targeting truncated forms of amyloid beta



Data continues to strengthen lecanemab – AAIC July 2021

A β plaque clearance, blood biomarker effect and clinical effect with a good safety profile

- Lecanemab treatment offers rapid and profound brain amyloid clearance (seen in both Phase 2b core study and open label extension (OLE))
- Blood biomarker Ab42/40 follow the brain amyloid levels when treated with lecanemab
- Clinical effect of lecanemab on clinical scales such as ADCOMS, ADAS-cog and CDR-SB in OLE support the clinical effect results seen in the core study
- Data support further benefit with continued dosing
- Phase 2b and OLE data shows that lecanemab has the best safety profile on ARIA-E, out of the four late-stage anti-amyloid antibody projects, even though full dose is given from day one



Picture source: www.alz.org

ABBV-0805: potential disease modifying antibody for Parkinson's disease – in Phase 1 preparing for Phase 2

High unmet medical need

No existing disease-modifying treatment



Younger patient group, still at working age

TODAY

>6 million¹ people with Parkinson's

Unique profile

Unique and targeted binding profile

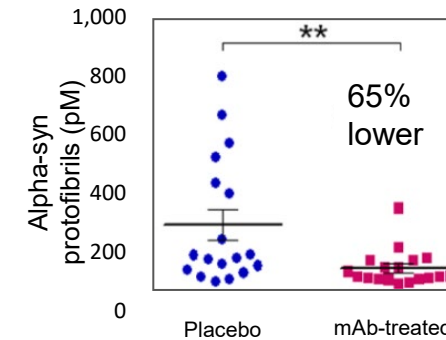
- Highly selective for toxic forms of misfolded alpha-synuclein (oligomers/protofibrils)

Built on genetic and pathology rationale

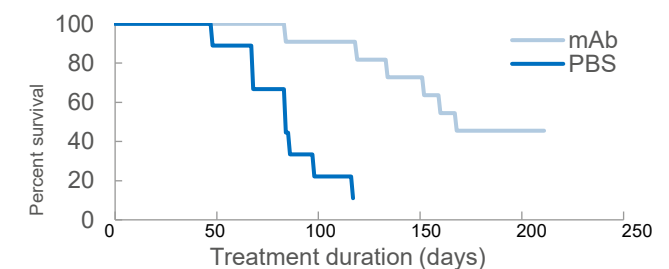
- Alpha-synuclein mutations lead to Parkinson's
- Alpha-synuclein oligomers/protofibrils are elevated in Parkinson's

Preclinical proof of concept

Reduction of neurotoxic alpha-synuclein oligomers/protofibrils



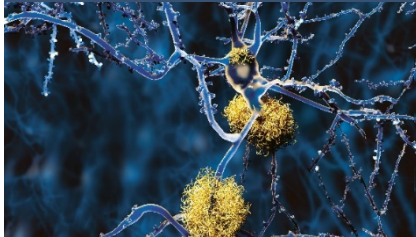
Delays disease progression and increases lifespan



1) Dorsey and Bloem, JAMA Neurology 2018;75:9-10

Early-stage portfolio continues to develop well

Alzheimer's disease



Discovery stage programs

- Expanded early-stage portfolio with 2 new AD+BT projects
- 6 fully-owned disease modifying antibody projects in Alzheimer's disease
- BAN2401 back-up in collaboration with Eisai

Parkinson's disease

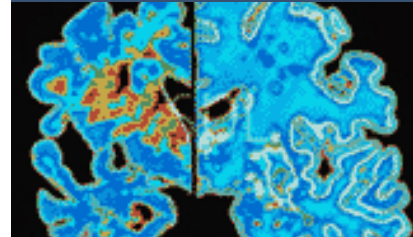


Discovery stage projects

- Preclinical stage alpha-synuclein projects in research collaboration with

abbvie

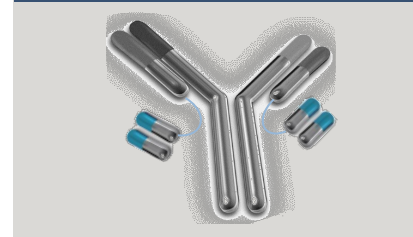
Other CNS disorders



Neurodegeneration research

- Lecanemab in indications other than Alzheimer's disease
- Research project in neurodegeneration ("ND") with potential in various CNS disorders

Blood-brain barrier



Brain Transporter (BT)

- Continued development of our Brain Transporter (BT) technology platform
- Collaboration with Uppsala University under Vinnova grant

Diagnostics



Diagnostics

- Continued development of imaging and biochemical biomarkers

BioArctic has a strong financial profile

- Listed on Nasdaq Stockholm Mid Cap, market capitalization of BSEK 12.1 (~1.4 BUSD)¹



- Close to BSEK 1.0 (110 MUSD) in cash

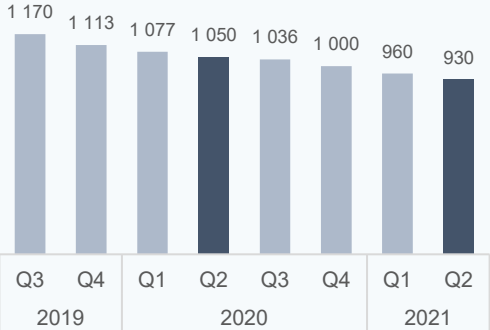


- Expected 2021 operating costs 170-200 MSEK

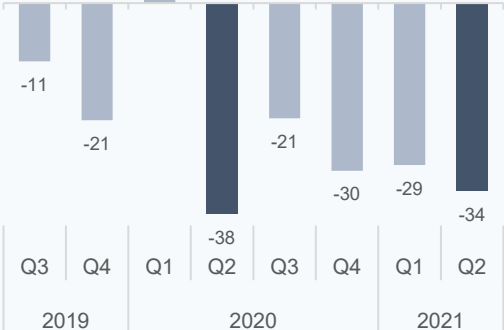


- Significant funding from partner research collaborations and license agreements, as well as grants
- Total potential collaboration deal value¹ of ~SEKbn 8.9 (~1 BUSD)¹ of which ~SEKbn 1.8 (~0.2 BUSD)¹ received
- Additional future royalty potential
- Milestone payments one-time nature explain fluctuations in financial results

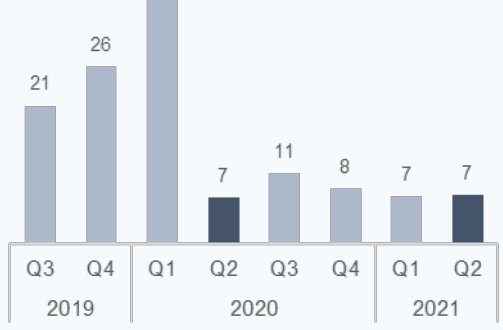
Cash Balance (MSEK)



Operating Profit/Loss (MSEK)



Net Revenues (MSEK)

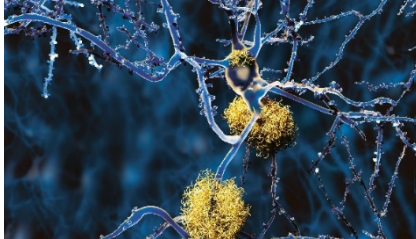


1) As of June 30, 2021



Upcoming news flow

Alzheimer's disease



Lecanemab (Eisai)

- Data presented at international congresses
- Phase 3 confirmatory study in early AD results 2022
- Phase 2b open label extension study results
- Phase 3 study in preclinical asymptomatic AD

Discovery stage programs

- Advance into preclinical development

Parkinson's disease



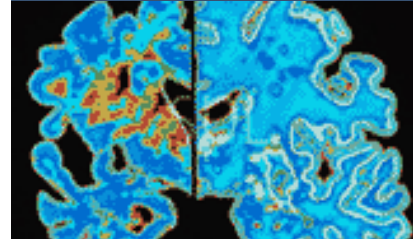
ABBV-0805 (AbbVie)

- Complete Phase 1 and start Phase 2
- Data presented at international congresses

Discovery stage projects

- Development in AbbVie collaboration

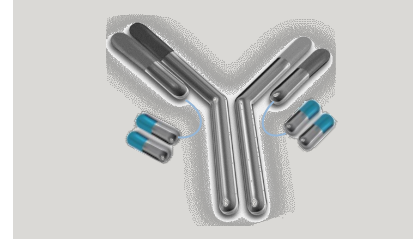
Other CNS disorders



Neurodegeneration research

- New project development
- New indications and new targets

Blood-brain barrier



Brain Transporter (BT) technology platform

- Continue development of platform

Diagnostics

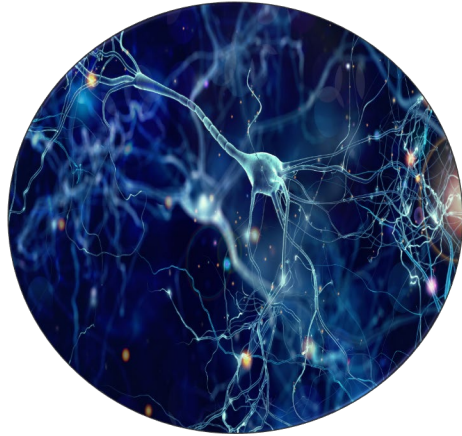


Diagnostics

- Continue development of imaging and biochemical biomarkers

BioArctic: With Patients in Mind

Great science



Great projects



Great partners



Great people

