

BIOARCTIC AB (PUBL)
NASDAQ STOCKHOLM: BIOA B

ABGSC Life Science Summit

May 25, 2021

Gunilla Osswald, PhD, CEO



Disclaimer

- This presentation has been prepared and produced by BioArctic AB (publ) (“BioArctic”) solely for the benefit of investment analysis of BioArctic and may not be used for any other purpose. Unless otherwise stated, BioArctic is the source for all data contained in this presentation. Such data is provided as at the date of this presentation and is subject to change without notice.
- This presentation includes forward-looking statements. These forward-looking statements involve known and unknown risks, uncertainties and other factors, which may cause BioArctic’s actual results, performance, achievements or industry results to be materially different from those expressed or implied by these forward-looking statements. Forward-looking statements speak only as of the date of this presentation and BioArctic expressly disclaims any obligation or undertaking to release any update of, or revisions to, any forward-looking statement in this presentation, as a result of any change in BioArctic’s expectations or any change in events, conditions or circumstances on which these forward-looking statements are based.
- This presentation does not constitute or form part of, and should not be construed as, an offer or invitation for the sale of or the subscription of, or a solicitation of any offer to buy or subscribe for, any securities, nor shall it or any part of it or the fact of its distribution form, or be relied on in connection with, any offer, contract, commitment or investment decision relating thereto, nor does it constitute a recommendation regarding the securities of BioArctic.
- The information in this presentation has not been independently verified.
- No regulatory body in Sweden or elsewhere has examined, approved or registered this presentation.

BioArctic – a unique Swedish biopharma company

Improving life for patients with central nervous system disorders



High unmet need for disease-modifying treatments for Alzheimer's and Parkinson's diseases creates **large commercial opportunity**



World-class research and development driven organization with basis in founder's breakthrough discoveries and fruitful collaborations with leading **academic researchers** and **pharma companies** generating and developing **innovative projects**



Attractive and well-balanced project portfolio with projects from discovery through Phase 3 and combination of both proprietary projects with substantial marketing and out-licensing potential and partnered projects generating income



Well-financed with approximately BSEK 1 (MUSD >110¹) in cash, **net profitable** during seven of the last eight years and **valuable collaboration agreements** totaling BSEK 8.9² (BUSD ~1) plus royalties

Attractive and well-balanced project portfolio combines fully-financed partner projects and cutting-edge proprietary projects

	Project	Partner	Discovery	Preclinical	Phase 1	Phase 2	Phase 3
ALZHEIMER'S DISEASE	Lecanemab (BAN2401) (<i>Clarity AD</i>)	Eisai ¹	Early Alzheimer's disease ³				
	Lecanemab (BAN2401) (<i>AHEAD 3-45</i>)	Eisai ¹	Preclinical (asymptomatic) Alzheimer's disease ⁴				
	BAN2401 back-up	Eisai					
	AD1801						
	AD1502						
	AD1503						
	AD-BT2802						
	AD-BT2803						
	AD2603						
PARKINSON'S DISEASE	ABBV-0805 ²	AbbVie					
	PD1601	AbbVie					
	PD1602	AbbVie					
OTHER CNS DISORDERS	Lecanemab (BAN2401)		Down's syndrome ⁵ Traumatic brain injury ⁵				
	ND3014						
BLOOD BRAIN BARRIER	Brain Transporter (BT) technology platform						
DIAGNOSTICS	Imaging and biochemical biomarkers – Alzheimer's disease						
	Imaging and biochemical biomarkers – Parkinson's disease	AbbVie					

as of March 31, 2021

- 1) Partnered with Eisai for lecanemab (BAN2401) for treatment of Alzheimer's disease. Eisai entered partnership with Biogen regarding lecanemab (BAN2401) in 2014
- 2) AbbVie in-licensed BAN0805 in late 2018 and develops the antibody with the designation ABBV-0805
- 3) Mild cognitive impairment due to Alzheimer's disease and mild Alzheimer's disease
- 4) Normal cognitive function with intermediate or elevated levels of amyloid in the brain
- 5) Dementia and cognitive impairment associated with Down's syndrome and with traumatic brain injury

Long-standing and extensive partnerships

Alzheimer's disease

Partner track record

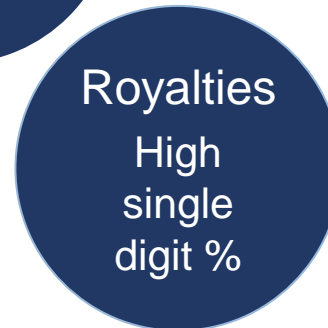
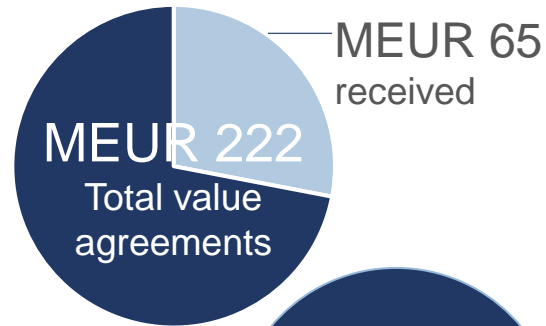


Discovered and developed world's best-selling medicine for symptoms in Alzheimer's



Industry-leading pipeline in dementia area

Collaboration and license



- BioArctic retains rights to lecanemab in other indications and option to market in the Nordics

Parkinson's disease

Partner track record



World's all-time best-selling medicine (BUSD 20)

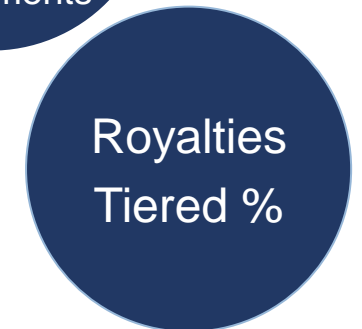
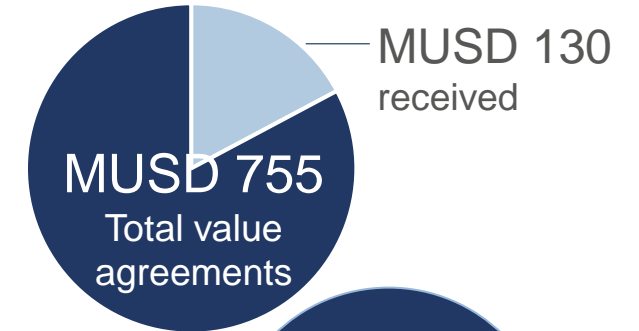


10 different indications in immunology

Approved product for symptoms associated with Parkinson's disease



Collaboration and license



- AbbVie global rights to alpha-synuclein portfolio for all indications

Sources: Eisai, AbbVie and BioArctic corporate information

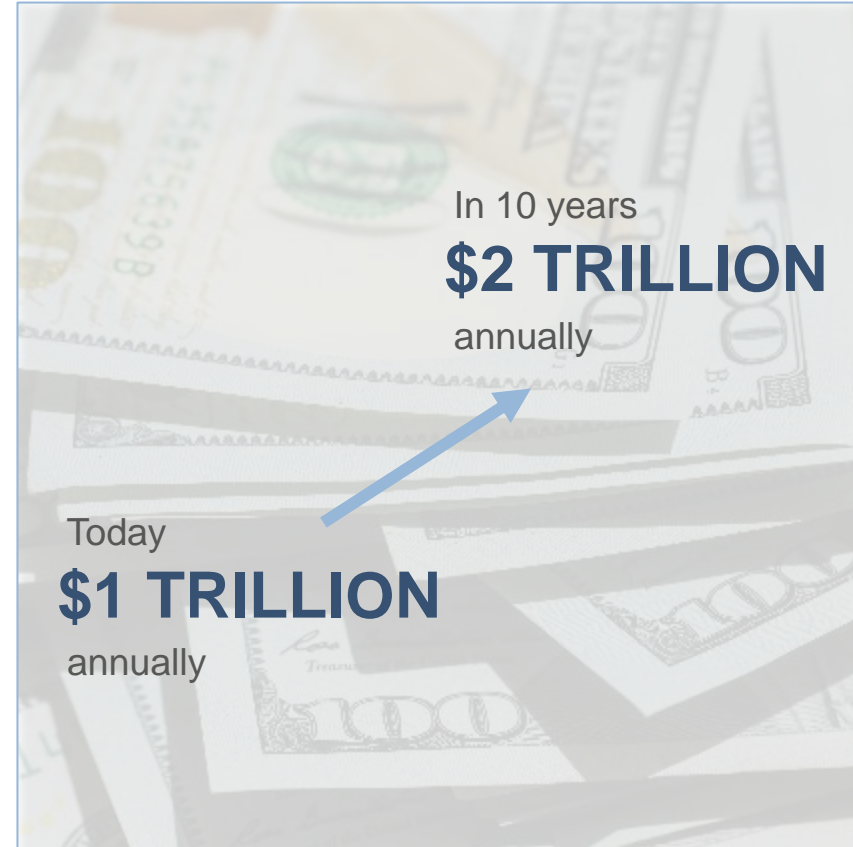
Alzheimer's disease – a global pandemic with a high unmet medical need and high costs to society

High unmet medical need

No existing disease-modifying treatment



High cost to society



Sources: WHO, <https://www.who.int/news-room/fact-sheets/detail/dementia>

Lecanemab (BAN2401): potential disease modifying antibody for Alzheimer's disease with unique binding profile

BAN2401 unique profile – selectively binding toxic protofibrils



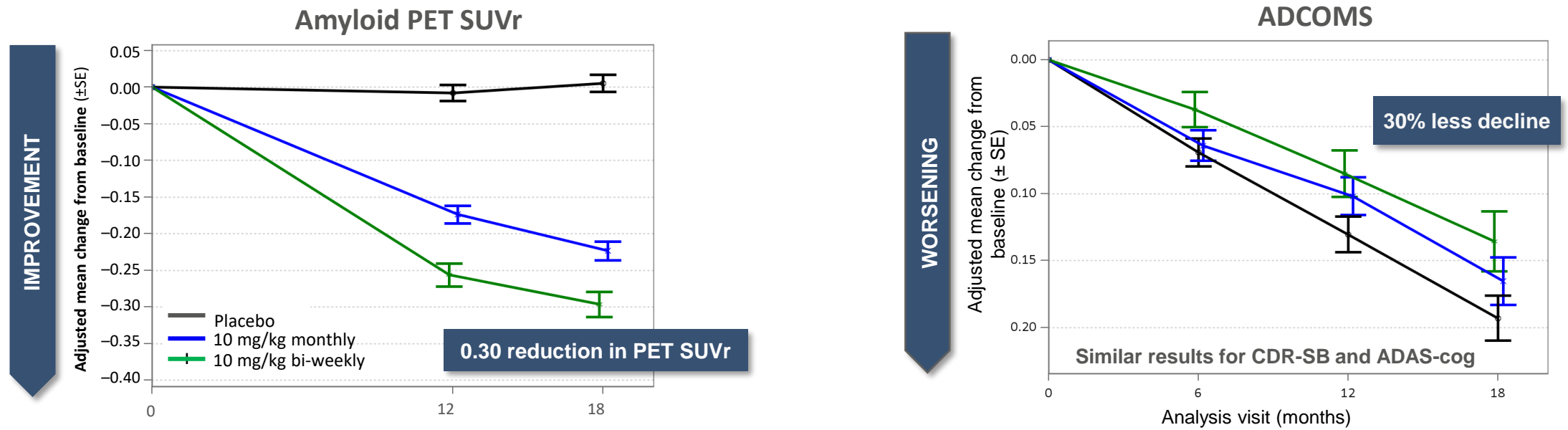

BIOARCTIC

BAN2401
(lecanemab)

Mechanism of Action

BAN2401 is a drug candidate currently being evaluated in clinical trials.

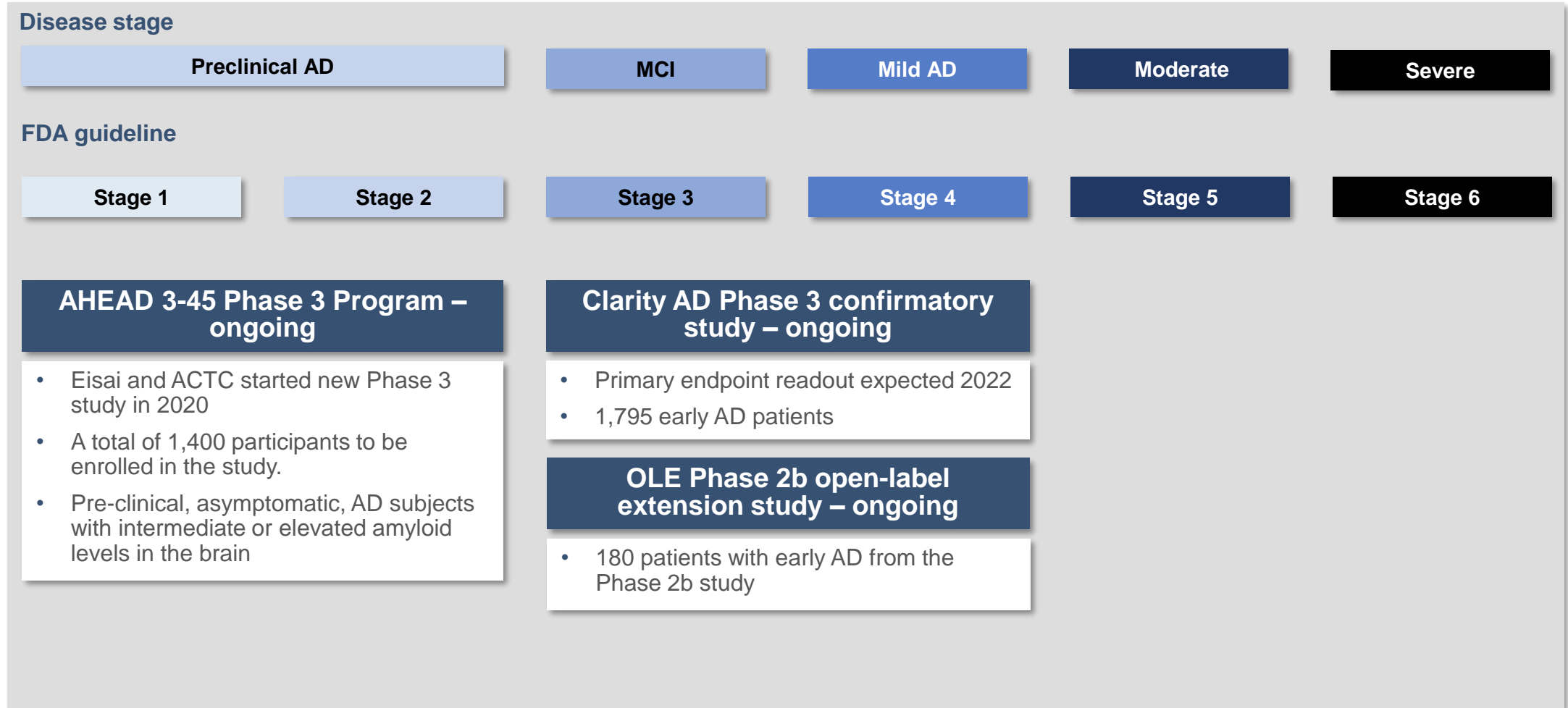
Lecanemab: potential disease modifying antibody for Alzheimer's disease with positive Phase 2b results



Lecanemab has positive Phase 2b results

- **Large trial:** 856 early Alzheimer's patients
- **Consistent effects** on clinical outcomes, imaging and neurodegenerative biomarkers
- **Rapid onset** of clinical effect
- **Effect increases over time**
- **Good safety profile** – no titration required due to low frequency of ARIA-E (<10%)

Broad lecanemab clinical program – driven by BioArctic’s partner Eisai



Why should we succeed where many others have failed?



Right target



- Address selectively the toxic protofibrils – soluble aggregated form of amyloid

Right patient population



- Early Alzheimer's – MCI due to AD & Mild AD
- Identify right patients – biomarkers

Right dose & exposure



- Select dose with effect and acceptable side-effect profile demonstrated in Phase 2
- No titration, same dose to all patients

Right measurements



- Sensitive cognition and function scales
- Biomarkers for disease progression and disease modification

Right safety



- Well tolerated with benign safety profile
- Low risk for amyloid related imaging abnormalities (ARIA) and no expected cardiovascular risk

Right study design and performance



- Build confirmatory Phase 3 program on robust Phase 2b results with dose selection
- Same patient population, dose, measurements
- Monitor variability to ensure study power

ABBV-0805: potential disease modifying antibody for Parkinson's disease – in Phase 1 preparing for Phase 2

High unmet medical need

No existing disease-modifying treatment



Younger patient group, still at working age

TODAY

>6 million¹ people with Parkinson's

Unique profile

Unique and targeted binding profile

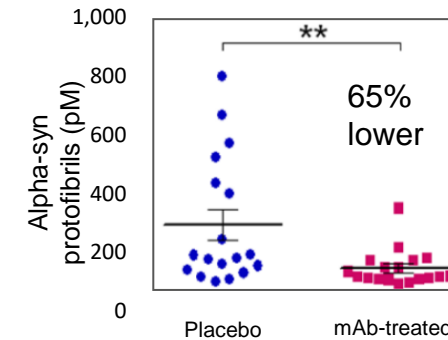
- Highly selective for toxic forms of misfolded alpha-synuclein (oligomers/protofibrils)

Built on genetic and pathology rationale

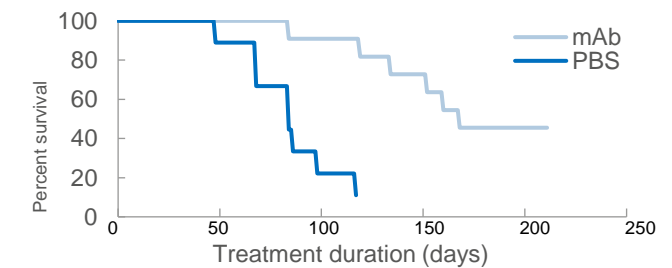
- Alpha-synuclein mutations lead to Parkinson's
- Alpha-synuclein oligomers/protofibrils are elevated in Parkinson's

Preclinical proof of concept

Reduction of neurotoxic alpha-synuclein oligomers/protofibrils



Delays disease progression and increases lifespan



1) Dorsey and Bloem, JAMA Neurology 2018;75:9-10

Upcoming news flow

Alzheimer's disease



Lecanemab (Eisai)

- Data presented at international congresses
- Phase 3 confirmatory study in early AD results 2022
- Phase 2b open label extension study results
- Phase 3 study in preclinical asymptomatic AD

Discovery stage programs

- Advance into preclinical development

Parkinson's disease



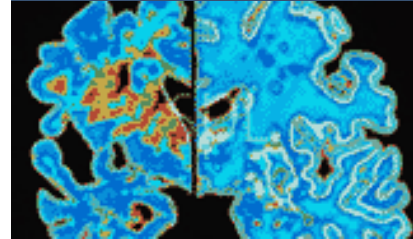
ABBV-0805 (AbbVie)

- Complete Phase 1 and start Phase 2

Discovery stage projects

- Development in AbbVie collaboration

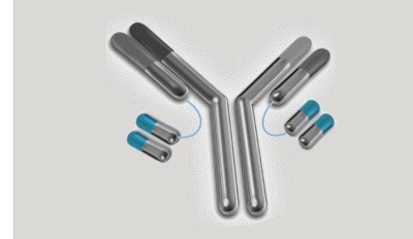
Other CNS disorders



Neurodegeneration research

- New project development
- New indications and new targets

Blood-brain barrier



Brain Transporter (BT) technology platform

- Continue development of platform

Diagnostics

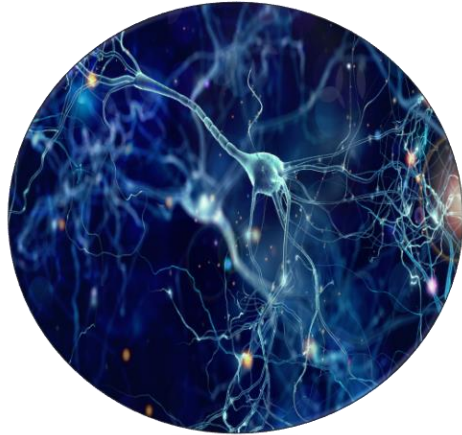


Diagnostics

- Continue development of imaging and biochemical biomarkers

BioArctic: With Patients in Mind

Great science



Great projects



Great partners



Great people





Questions?