

BIOARCTIC AB (PUBL)  
NASDAQ STOCKHOLM: BIOA B

# BioArctic Presentation

## Redeye Growth Day

Stockholm, June 10, 2019

---

*Gunilla Osswald, PhD, CEO*



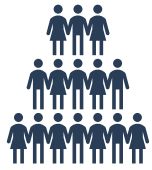
# Disclaimer

---

- This presentation has been prepared and produced by BioArctic AB (publ) (“BioArctic”) solely for the benefit of investment analysis of BioArctic and may not be used for any other purpose. Unless otherwise stated, BioArctic is the source for all data contained in this presentation. Such data is provided as at the date of this presentation and is subject to change without notice.
- This presentation includes forward-looking statements. These forward-looking statements involve known and unknown risks, uncertainties and other factors, which may cause BioArctic’s actual results, performance, achievements or industry results to be materially different from those expressed or implied by these forward-looking statements. Forward-looking statements speak only as of the date of this presentation and BioArctic expressly disclaims any obligation or undertaking to release any update of, or revisions to, any forward-looking statement in this presentation, as a result of any change in BioArctic’s expectations or any change in events, conditions or circumstances on which these forward-looking statements are based.
- This presentation does not constitute or form part of, and should not be construed as, an offer or invitation for the sale of or the subscription of, or a solicitation of any offer to buy or subscribe for, any securities, nor shall it or any part of it or the fact of its distribution form, or be relied on in connection with, any offer, contract, commitment or investment decision relating thereto, nor does it constitute a recommendation regarding the securities of BioArctic.
- The information in this presentation has not been independently verified.
- No regulatory body in Sweden or elsewhere has examined, approved or registered this presentation.

# BioArctic – a unique Swedish biopharma company

---



**High unmet patient need** for disease-modifying treatments for Alzheimer's and Parkinson's diseases creates **large commercial opportunity**



**World-class research and development driven organization** with basis in founder's breakthrough discoveries and fruitful collaborations with leading **academic researchers** generating **innovative projects**



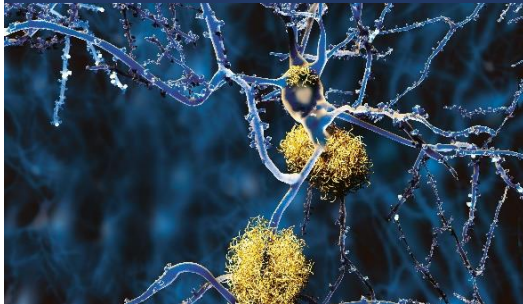
**Attractive and well-balanced project portfolio** with projects from discovery through Phase 3 and combination of both proprietary projects with substantial marketing and out-licensing potential and partnered projects generating income



**Well-financed** with >1 BSEK in cash, **positive financial results** during the last six years and **valuable collaboration agreements** totaling 9.3 BSEK plus royalties

# Focused in 4 key areas within Central Nervous System diseases to deliver innovative therapies

## ALZHEIMER'S DISEASE



### BAN2401

- Strong clinical Phase 2b results in early Alzheimer's
- Phase 3 confirmatory study started by partner



### Discovery stage programs

- 3 additional preclinical stage disease modifying antibody programs with different mechanisms

## PARKINSON'S DISEASE



### ABBV-0805

- Phase 1 study ongoing by partner

abbvie

### Discovery stage projects

- Preclinical stage projects in research collaboration partnered with

abbvie

## COMPLETE SPINAL CORD INJURY



### SC0806

- Phase 1 safety evaluated and Phase 2 started

## DIAGNOSTICS AND TECHNOLOGY





### Imaging and biochemical biomarkers

- For Alzheimer's and Parkinson's diseases

### Blood-Brain Barrier Technology

- Developing new technology platform to facilitate the passage of biologics over the blood-brain barrier

# Attractive and well-balanced project portfolio combines fully-financed partner projects and cutting-edge proprietary projects

	Product candidate	Indication	Partner	Discovery	Preclinical	Phase 1	Phase 2	Phase 3
Neurodegenerative Diseases	<b>BAN2401:</b> anti-A $\beta$ antibody	Alzheimer's Disease	 Eisai Biogen <sup>1</sup>	→				
	<b>BAN2401:</b> anti-A $\beta$ antibody	Down's Syndrome <sup>2</sup> Traumatic Brain Injury <sup>2</sup>	—	→				
	<b>BAN2401 BACK-UP:</b> anti-A $\beta$ antibody	Alzheimer's Disease	 Eisai	→				
	<b>AD1801:</b> Undisclosed information	Alzheimer's Disease	—	→				
	<b>AD1502:</b> Undisclosed information	Alzheimer's Disease	—	→				
	<b>AD1503:</b> Undisclosed information	Alzheimer's Disease	—	→				
	<b>ABBV-0805<sup>3</sup>:</b> anti- $\alpha$ -synuclein antibody	Parkinson's Disease	abbvie	→				
	<b>PD1601:</b> anti- $\alpha$ -synuclein antibody	Parkinson's Disease	abbvie	→				
	<b>PD1602:</b> anti- $\alpha$ -synuclein antibody	Parkinson's Disease	abbvie	→				
Diagnostics & Technology	<b>IMAGING AND BIOCHEMICAL BIOMARKERS:</b> A $\beta$	Alzheimer's Disease	—	→				
	<b>IMAGING AND BIOCHEMICAL BIOMARKERS:</b> $\alpha$ -synuclein	Parkinson's Disease	abbvie	→				
	<b>BBB-TECHNOLOGY:</b> blood-brain barrier	Multiple application areas	—	→				
Spine	<b>SC0806:</b> FGF1/medical device	Complete Spinal Cord Injury	—	→				

as of March 31, 2019

- 1) Partner with Eisai on BAN2401 for treatment of Alzheimer's disease. Eisai partnered with Biogen on BAN2401 in 2014
- 2) Dementia and cognitive impairment associated with Down's syndrome and Traumatic Brain Injury
- 3) AbbVie in-licensed BAN0805 in late 2018 and will continue to develop BAN0805, now with the designation ABBV-0805

# Long-standing and extensive partnerships

## Alzheimer's disease

### Partner Track Record



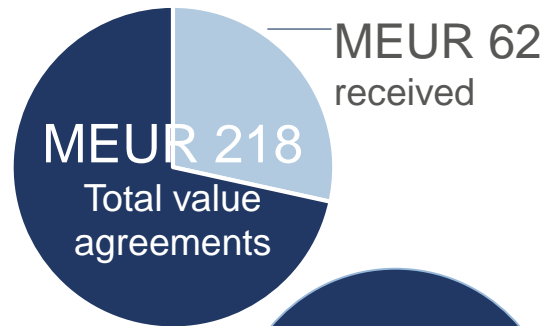
Discovered and developed world's best selling medicine for symptoms in Alzheimer's



**10+ projects in dementia**

Currently in development

### Collaboration and license



Royalties  
High single digit %

- BioArctic retains rights to BAN2401 in other indications and option to market in the Nordics

## Parkinson's disease

### Partner Track Record



World's all time best selling medicine (BUSD 20)

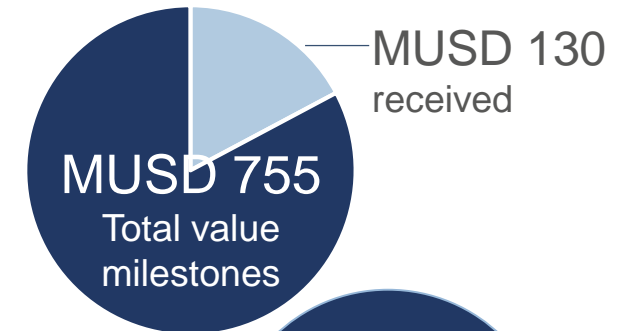


10 different indications in immunology

Approved product for symptoms associated with Parkinson's disease



### Collaboration and license



Royalties  
Tiered %

- AbbVie global rights to alpha-synuclein portfolio for all indications

Sources: Eisai, AbbVie and BioArctic corporate information

# BioArctic has a strong financial profile

- Listed on Nasdaq Stockholm Mid Cap, market capitalization of SEKbn 6.7



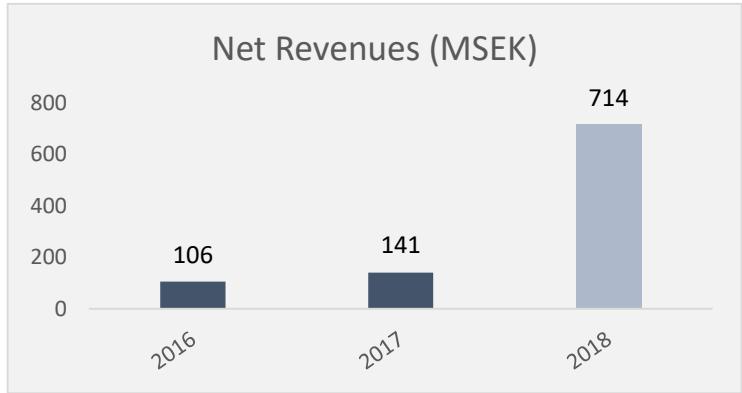
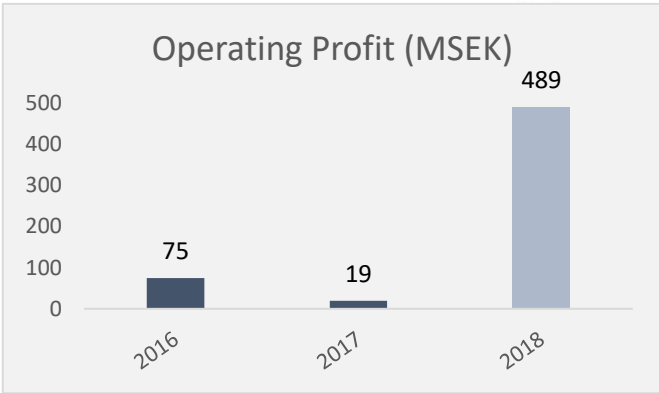
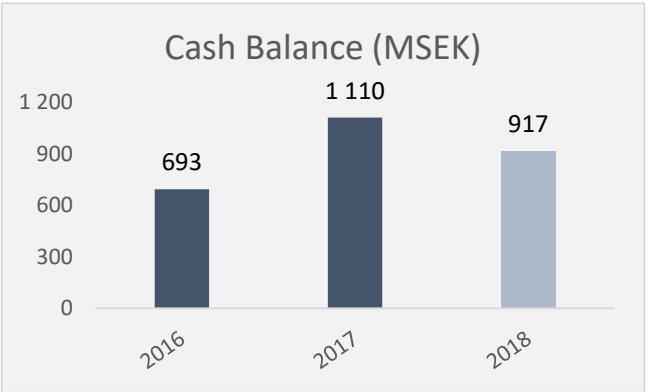
- More than 1 billion SEK in cash
- Equity ratio at 73 percent



- Positive financial results during the last 6 years
- Expected 2019 operating costs 190-250 MSEK

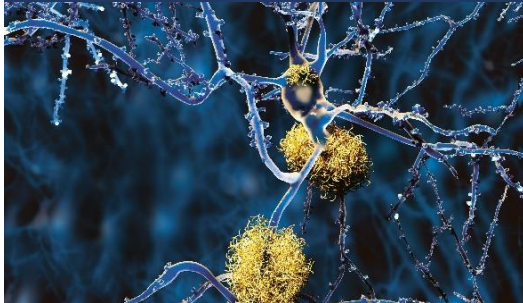


- Significant funding from partner research collaborations and license agreements, as well as grants
- Total potential collaboration deal value of ~SEKbn 9.6 of which ~SEKbn 1.3 received
- Additional future royalties potential
- Milestone payments one-time nature explain fluctuations in financial results



# Upcoming news flow

## ALZHEIMER'S DISEASE



### **BAN2401** (Eisai)

- Present data at international congresses incl. AAIC in July
- Phase 3 confirmatory study results mid-2022
- Phase 2b open label extension study results
- Secondary prevention study start 2020

### **Discovery stage programs**

- Preclinical development

## PARKINSON'S DISEASE



### **ABBV-0805** (AbbVie)

- Complete Phase 1 study

### **Discovery stage projects**

- Continue development in AbbVie collaboration

## COMPLETE SPINAL CORD INJURY



### **SC0806**

- Phase 1/2 study interim analyses of safety and efficacy

## DIAGNOSTICS AND TECHNOLOGY



### **Blood-Brain Barrier Technology**

- Expansion and continued development



# Question & Answers

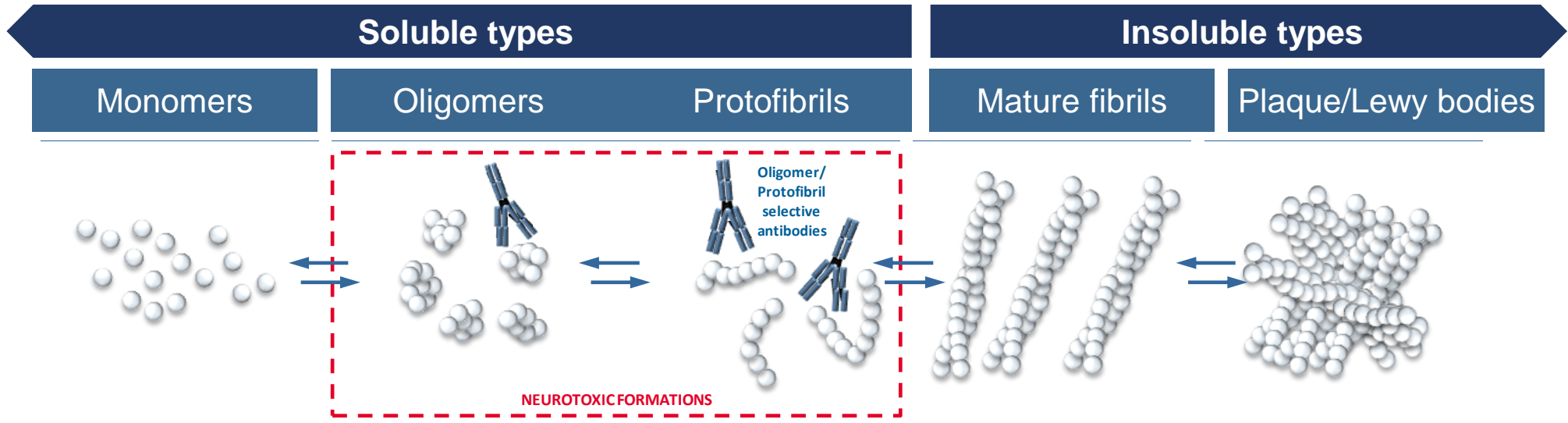
Redeye Growth Day  
Stockholm, June 10, 2019

---

*Gunilla Osswald, PhD, CEO*

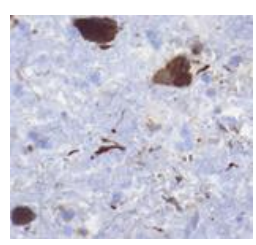
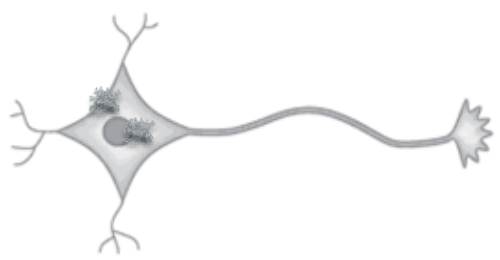
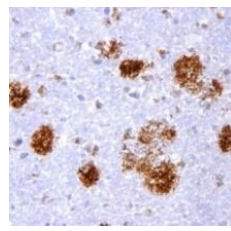
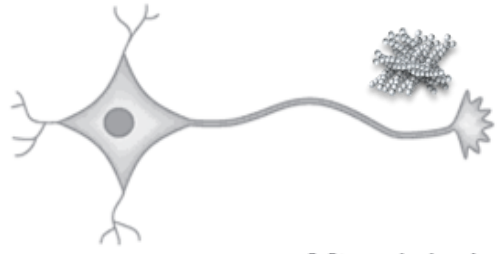


# Targeting the toxic forms of misfolded proteins is important when designing therapies for neurodegenerative diseases



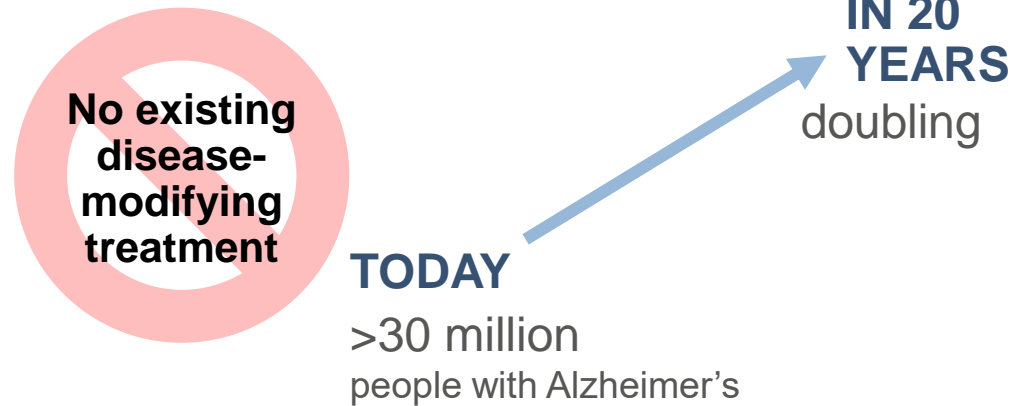
Alzheimer's disease: misfolded amyloid beta results in amyloid plaques

Parkinson's disease: misfolded alpha-synuclein results in Lewy Bodies



# BAN2401: potential disease modifying antibody for Alzheimer's disease with strong Phase 2b results now in Phase 3

## High Unmet Medical Need



## BAN2401 unique profile

### Unique and targeted binding profile

- Highly selective for toxic forms of misfolded Abeta (oligomers/protofibrils)

### Unique clinical fingerprint

- Rapid onset of clinical effect
- Consistent effects
- No titration required due to low frequency of ARIA-E

## BAN2401 has strong Phase 2b results

- **Large trial:** 856 early Alzheimer's patients
- **Consistent effects** on clinical outcomes, imaging and neurodegenerative biomarkers
- **Effect increase over time**
- **Good safety profile**

## Eisai announced 3 clinical trials underway

1. **Confirmatory Phase 3 study** ("Clarity AD") started
  - Primary endpoint final readout expected mid-2022
2. Phase 2b open label extension ongoing
3. Secondary prevention study ("A45 Study") in planning